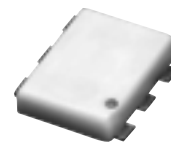


Surface Mount Frequency Mixer

Level 17 (LO Power +17 dBm) 10 to 1000 MHz

NEW!

ADEX-10H



CASE STYLE: CD542
PRICE: \$3.45 ea.
QTY.: (10-49)

Maximum Ratings

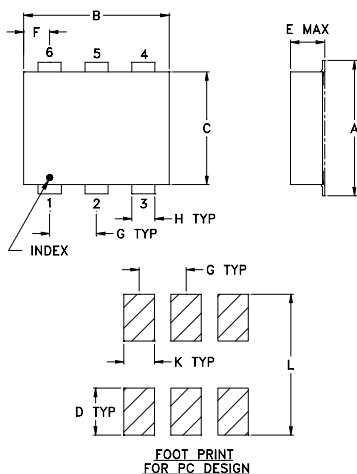
Operating Temperature	-40°C to 85°C
Storage Temperature	-55°C to 100°C
RF Power	200mW
IF Current	40mA

Pin Configuration

LO	6
RF	3
IF	2
GROUND	1,4,5

EVALUATION BOARD P/N: TB-03

Outline Drawing



Outline Dimensions (inch mm)

A	B	C	D	E	F	G	H
.280	.310	.220	.100	.112	.055	.100	.030
7.11	7.87	5.58	2.54	2.84	1.40	2.54	0.76

J	K	L	wt.
—	.065	.300	grams
—	1.65	7.62	.40

Features

- **EX**cellent L-R isolation, 54 dB typ.
- **EX**cellent flat conversion loss ± 0.35 dB typ. over entire band
- low conversion loss, 7.0 dB typ.
- good VSWR, 1.4:1 typ. for LO, 1.6:1 typ. for RF, 1.4:1 typ. for IF
- good performance to 1500 MHz
- solder plated leads for excellent solderability
- low profile package, US Patent 6133525

Applications

- cellular
- PCN

Electrical Specifications

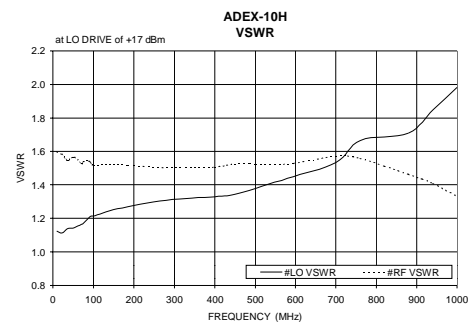
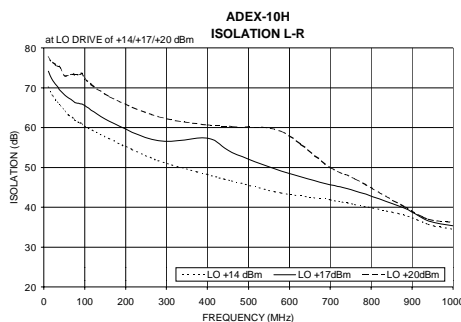
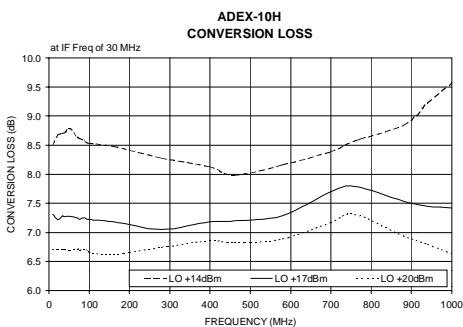
FREQUENCY (MHz)	CONVERSION LOSS* (dB)	LO-RF ISOLATION (dB)			LO-IF ISOLATION (dB)			IP3@ center band Typ. (dBm)	E FACTOR						
		L	M	U	L	M	U								
10-1000	DC-800	68	55	55	40	47	31	46	30	32	20	26	13	22	0.5

1dB Compr.: +14 dBm typ.
E = $[(IP3(dBm) - LO Power(dBm))/10]$
*Conversion loss increases 0.5 dB when IF is above 150 MHz.

L = low range [f_i to $10 f_i$]
M = mid range [$10 f_i$ to $f_o/2$]
U = upper range [$f_o/2$ to f_o]
m = mid band [$2f_i$ to $f_o/2$]

Typical Performance Data

Frequency		Conversion Loss (dB)	Isolation L-R (dB)	Isolation L-I (dB)	VSWR LO port (:1)	VSWR RF port (:1)
RF MHz	LO MHz	LO +17dBm	LO +17dBm	LO +17dBm	LO +17dBm	LO +17dBm
10.00	40.00	7.31	74.12	50.79	1.12	1.60
22.00	52.00	7.22	71.77	48.34	1.11	1.58
40.00	70.00	7.27	69.34	45.86	1.14	1.55
52.00	82.00	7.28	68.06	44.49	1.15	1.57
70.00	100.00	7.25	66.74	42.68	1.17	1.53
88.00	118.00	7.25	65.95	41.20	1.20	1.54
94.00	124.00	7.23	65.79	40.80	1.21	1.53
100.00	130.00	7.22	65.51	40.41	1.21	1.52
160.00	190.00	7.18	61.66	36.78	1.26	1.52
280.00	310.00	7.05	56.68	32.77	1.31	1.50
400.00	430.00	7.18	57.28	32.20	1.33	1.51
580.00	610.00	7.29	49.11	30.60	1.44	1.52
700.00	730.00	7.70	45.63	29.87	1.53	1.57
940.00	970.00	7.45	36.58	23.49	1.85	1.41
1000.00	1030.00	7.42	35.39	22.50	1.98	1.33



Distribution Centers NORTH AMERICA 800-654-7949 • 417-335-5935 • Fax 417-335-5945 • EUROPE 44-1252-832600 • Fax 44-1252-837010

ISO 9001 CERTIFIED

INTERNET <http://www.minicircuits.com>

P.O. Box 350166, Brooklyn, New York 11235-0003 (718) 934-4500 Fax (718) 332-4661

REV. OR
M79465
ED-9813/1
ADEX-10H
DJ/TD/CP
011217